



Future Business Plan

**Helping Nebraska Capitalize
on Unique Opportunity**

301 Centennial Mall South, Fourth Floor
Box 95107 • Lincoln, Nebraska 68509

Phone 402.471.2676

www.nebraskacorn.org

May 2007



Dear Nebraska Agriculture Partner:

It's no secret that agriculture in Nebraska has undergone significant and exciting change in recent months. It is also clear that no other state is better situated nationally and globally to capitalize on the powerful relationship between corn, ethanol, distillers grains and livestock production than Nebraska.

This is our time. But transforming this incredible potential into reality and economic success for Nebraska will require vision, cooperation, leadership—and resources. The Nebraska Corn Board has developed this business plan as a roadmap for helping Nebraska capitalize on this unique opportunity. As a significant and valued partner in Nebraska agriculture and rural development, we're asking for your review and input on this plan as the Board considers its next steps.

As you will see in the enclosed business plan, the Nebraska Corn Board intends to focus on following major areas:

- Expanding support for the development of environmentally responsible, economically viable livestock production in Nebraska to enhance rural development, ensure the continued viability of the ethanol industry, and provide opportunities for young farm families.
- Stronger commitment to research focused on the use of distillers grains in the diets of all major species—from beef cattle to dairy, from swine to poultry.
- Support and collaboration with the University of Nebraska to ensure the state's leadership in animal nutrition research and to provide educational support for agriculture and livestock production in the state.
- Support for research and extension activities related to environmental stewardship including water usage, nutrient management and animal waste.
- Addressing critical issues such as transportation, marketing, and risk management.

You may find it interesting that this plan focuses less on corn production and more on the development and support for Nebraska's livestock producers, rural development, environmental stewardship and research. The Nebraska Corn Board understands that corn producers do not stand alone in this state. Our success is intertwined with that of our customers, our University and our colleagues in agriculture and rural development. The opportunities that exist hold great promise for all of us—and the business plan illustrates the Nebraska Corn Board's commitment to working with others to ensure that these opportunities do not pass us by.

We welcome your suggestions on ways to strengthen this plan and how we can work together to help Nebraska capitalize on its unique opportunity to become the nation's leader in corn-ethanol-distillers grains-livestock—and lay the foundation for statewide economic vitality that will have a powerful and positive effect on Nebraska for years to come.



Future Business Plan



History of Nebraska's Corn Checkoff Program

The Nebraska Corn Board was created by the Unicameral in 1978 for the purpose of corn market development, research, education and promotion. The Nebraska Corn Growers Association carried the checkoff proposal to key rural legislators. It met with little opposition and the Nebraska Corn Resources Act became effective July 1, 1978.

The 1978 legislation gave the Nebraska Corn Board the authority to levy up to 4/10¢ per bushel of corn, though it has never done so. In fact, the current checkoff rate of 1/4¢ per bushel has been in place for the past 19 years. *(See chart on checkoff rate changes in Nebraska at right.)*

Checkoff resources are invested by a nine-member board made up of corn producers. Eight of the board members represent specific districts in the state and are appointed by the Governor. A ninth at-large member is selected by the eight district board members.

Checkoff investments are made in a variety of programs designed to identify new markets for corn, nurture and grow existing markets, conduct appropriate research and implement producer and consumer education programs.

The Nebraska Corn Board also supports the efforts of a number of national cooperators such as the National Corn Growers Association, the U.S. Grains Council, the U.S Meat Export Federation and the USA Poultry & Egg Export Council.

By statute, the Nebraska Corn Board is not allowed to influence state legislation, but it is authorized to invest up to 25% of its revenues to represent the interests of Nebraska corn producers at the federal level.

Total Producer Investment in Nebraska's Corn Checkoff (FY1978-FY2007)

Over the nearly 30 years of the corn checkoff, Nebraska producers have invested a total of less than 6¢ per bushel to create new markets for their product. The 1/4¢ per bushel rate has not changed for 19 years.

YEAR	CHECKOFF RATE/BUSHEL
FY1978-79	10/100¢
FY1979-80	10/100¢
FY1980-01	10/100¢
FY1981-82	10/100¢
FY1982-83	10/100¢
FY1983-84	10/100¢
FY1984-85	15/100¢
FY1985-86	15/100¢
FY1986-87	15/100¢
FY1988-89	25/100¢
FY1989-90	25/100¢
FY1990-91	25/100¢
FY1991-92	25/100¢
FY1992-93	25/100¢
FY1993-94	25/100¢
FY1994-95	25/100¢
FY1995-96	25/100¢
FY1996-97	25/100¢
FY1997-98	25/100¢
FY1998-99	25/100¢
FY1999-2000	25/100¢
FY2000-01	25/100¢
FY2001-02	25/100¢
FY2002-03	25/100¢
FY2003-04	25/100¢
FY2004-05	25/100¢
FY2005-06	25/100¢
FY2006-07	25/100¢
TOTAL	5.95¢



Future Business Plan



A Time of Incredible Change—and Opportunity

After decades of working to build the ethanol industry in Nebraska, success is here. Some have said that the advent of the ethanol industry in Nebraska is the most significant rural development initiative since the REA brought electricity to the farm fifty years ago. That may not be far off when you consider that:

- The Renewable Fuels Standard (RFS) included in the 2005 Energy Bill suddenly “legitimized” the ethanol industry—driving construction of plants and demand for corn.
- Nebraska has 13 ethanol plants in production and as many under construction. We’re now the second largest ethanol producer in the nation.
- By 2009, Nebraska is projected to produce 2.2 billion gallons of ethanol annually.
- By the end of 2009, Nebraska is projected to process the equivalent of 59% of total corn production in the state into ethanol.
- By the end of 2009, production of distillers grains in Nebraska will increase from today’s level of 2 million tons to more than 6 million tons.
- Dozens of rural Nebraska communities are being reenergized by the investment, jobs and tax revenues generated by ethanol production.

This is positive change brought about in large part by the investment, leadership and involvement of Nebraska’s corn producers through their corn checkoff.

The most profound change we have seen of late is the rapid increase in corn values—from \$1.80 per bushel to nearly \$4.00 in a matter of a few months. Ironically, this run up in corn prices occurred during the harvest of what was predicted to be the world’s second largest corn crop on record. Who can remember another time when an abundance of corn and an increase in the price occurred simultaneously?

The “Other” Checkoff

An additional checkoff on corn has been implemented by the Legislature to create an incentive fund for the expansion of the ethanol industry in the state. The Ethanol Production Incentive Cash (EPIC) fund checkoff rate is currently at 7/8¢ per bushel and is administered by the Nebraska Department of Revenue. These funds go directly to ethanol producers in Nebraska based on annual gallons of production for a specified period of time. The EPIC fund checkoff has undergone numerous changes over the years and is scheduled to end in 2012.

The Nebraska Corn Board has no control or administrative responsibility regarding this checkoff on corn.



Future Business Plan



While corn prices have moderated somewhat in recent weeks, USDA has consistently lowered their 2007 production estimates and carryover stocks, which have kept prices at higher levels. This has created concern among the number one customer for Nebraska corn—livestock producers. Cattle, dairy, pork and poultry producers have all seen their feed costs increase. The Nebraska Corn Board has been working in concert with livestock groups to find ways in which our valued livestock industry can co-exist with the ethanol industry—and each contribute to the other’s success.

Corn Checkoff Rates in Bordering States

Nebraska has the lowest checkoff rate of any of our neighboring states. Even with the proposed increase to 4/10¢, we will remain the lowest.

Colorado	1¢ per bushel
South Dakota	1¢ per bushel
Iowa	1/2¢ per bushel
Missouri	1/2¢ per bushel
Kansas	1/2¢ per bushel
NEBRASKA	1/4¢ per bushel

Nationally, the corn and ethanol industries have been in the spotlight as some have voiced concerns about food prices, water usage, energy benefits, environmental impacts and government policy related to transforming corn into fuel.

These are exciting and challenging times—times that demand imagination, innovation and investment. Times that will require cooperation, coalitions and collaboration with key partners, customers and agriculture and rural development leadership.

The success of the Nebraska corn checkoff is beyond question. For less than 6¢ per bushel—the total investment over the past 29 years—corn producers have built new markets, created new products, fostered a positive policy environment for renewable fuels and are growing more corn with fewer chemicals.

But the demands on the checkoff continue to elevate. Not only must we continue to nurture and protect the established programs that have proven to be valuable for the state’s corn producers, we must also invest resources in the possibilities and potential for the future—including capitalizing on the once-in-a-lifetime opportunity that exists for Nebraska agriculture and Nebraska’s citizens at this promising point in our state’s history.

At the same time, operating costs for the Nebraska Corn Board are increasing—as are costs for the various cooperators that the Board funds to accomplish objectives on a state, national and international level. Existing revenues generated by the current 1/4¢ per bushel checkoff rate would continue to fund current programs including administration, education, export promotions, communications and other in-state programs such as LEAD, Ag in the Classroom, Nebraska Ag Youth Institute and others.

Even with an expected increase in acres this year, the Nebraska Corn Board has already received more funding requests for 2007-08 than it expects to receive in revenue. In other words, significant new initiatives simply cannot be accommodated with the current checkoff rate.

For that reason, the Nebraska Corn Board is exploring the possibility of raising the Nebraska corn checkoff to the 4/10¢ per bushel rate originally authorized in 1978.

New revenues generated by the increase would be directed solely to initiatives outlined in this business plan—and every one of those initiatives is focused on work within the borders of Nebraska.



Future Business Plan



What is at risk?

When corn producers do well, Nebraska does well. When livestock producers are prospering, the state's coffers enjoy increased revenues. Now, with the addition of ethanol production to the state, we have a powerful third partner in adding value to Nebraska's abundant agricultural resources—and we must take the initiative to ensure that ethanol production, too, stays strong over the long haul.

After the decades of effort and millions of dollars invested in creating the ethanol industry in Nebraska, we simply cannot afford to stand by congratulating ourselves for a job well done. Significant threats exist that could devastate one or all of the livestock-corn-ethanol partners: wild price swings, escalating input costs, competition from other states and nations, etc. The last thing we want to see is an ethanol plant in mothballs or our livestock industry moving to another state or another country.

Corn, ethanol and livestock are a three-legged stool in Nebraska. Weaken any one, and the stability of the other two is weakened as well.

Nebraska corn producers realize and appreciate the fact that livestock production remains our number one customer—and that a healthy livestock industry in the state helps ensure that corn producers and ethanol producers have a market for their products. We must do what we can to strengthen the livestock industry in Nebraska—thus assuring a ready market for the millions of tons of distillers grains being produced by ethanol plants. By taking this initiative, we can help sustain the ethanol industry, which in turn generates demand for Nebraska corn producers.

If we do not address these issues proactively and immediately, we risk losing an opportunity to secure economic stability from border to border for Nebraska. Now is the time for vision, investment, innovation and collaboration.

Current Commodity Checkoff Rates

Several other grain commodities have checkoff programs created in the late 1970s or early 1980s. Some programs are now national rather than state-based. Following is an analysis of the current checkoff rates for major grain commodities in Nebraska—and the percent that the checkoff rate represents of the current value of those commodities. The corn checkoff rate is the lowest among all of these commodities.

COMMODITY	RATE	CURRENT VALUE*	% of VALUE
Wheat	1.25¢ per bushel	\$4.57/bushel	.27%
Grain Sorghum	1¢ per cwt	\$6.66/cwt	.15%
Soybeans	.5% of bushel value	\$7.43/bushel	.5%
Corn	1/4¢ per bushel	\$4.00/bushel	.06%

*Prices of commodity based on Chicago Board of Trade on February 8, 2007.



Future Business Plan



A Nebraska-Focused Business Plan

It is important to note that every one of the strategies and tactics included in this business plan for revenues generated by the proposed increase in the checkoff rate is focused squarely on Nebraska.

Why? Because no state in the nation is better positioned than Nebraska to take advantage of the new corn-ethanol-distillers grains-livestock phenomenon.

This is an incredible opportunity for our state, but it is also ours to squander—if we do not strike while the iron is hot and do what is necessary to not only capitalize on what is happening today, but to create a solid foundation that will help us sustain this economic vitality over the long term.

We cannot stand idly by. We must do everything possible to create the vision, investment and coalitions necessary to transform this moment in time into decades of prosperity for Nebraska.

The business plan recognizes the fact that Nebraska corn producers cannot do this alone. That’s why this plan outlines ways in which the Nebraska Corn Board can work with other key players in the state—ethanol producers, the University of Nebraska, livestock producers, state agencies and others—to ensure that we make the most of this unique opportunity and enjoy the greatest return on our investment.

Nebraska corn producers can help accomplish these objectives by providing financial resources targeted to helping Nebraska strengthen its leadership in agriculture, livestock and ethanol. In addition to increased checkoff revenue directed to Nebraska initiatives, we also plan an even more aggressive effort in applying for grants from the state, federal and private sectors to complement the process—with matching funds coming from the increased checkoff revenue.

Nebraska corn producers have much to gain if we can help reduce volatility in our markets—as well as those in the ethanol and livestock industries.

No state in the nation is better positioned to capitalize on the new corn-ethanol-distillers grains-ethanol phenomenon.

That’s why this business plan is 100% focused on Nebraska-based initiatives.

Nebraska’s National Leadership

Irrigated Corn Production	1st
Ethanol Production	2nd
Distillers Grains Production	2nd
Cattle on Feed	2nd
Cattle Processing	2nd
Overall Corn Production	3rd
Pork Processing	3rd
Pork Production.....	5th



Future Business Plan



The Proposal

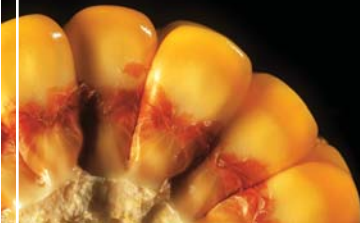
The Nebraska Corn Board is currently exploring the option of exercising the authority granted in 1978 to levy a checkoff of up to 4/10¢ per bushel. This increase from the current 1/4¢ per bushel checkoff rate (the rate for the past 19 years) could generate an additional \$3.5 million to \$4 million over the next two years—with these increased resources to be directed to the following primary objective:

To help secure Nebraska as the leading state in livestock production utilizing the co-products of the ethanol industry.

The business plan that follows is focused on three main strategies to which the increased revenues will be directed:

- Supporting the expansion of **responsible livestock production** in Nebraska.
- Supporting **research initiatives** that are focused on the continued success of the state's livestock and ethanol industries.
- Establishing **key partnerships and initiatives** that provide a foundation for long-term growth and success of the corn, ethanol and livestock industries in the state—and help Nebraska corn producers **leverage their checkoff investment** by building synergy with other like-minded organizations.

In the pages that follow, these three primary strategies are outlined—along with proposed tactics for implementing these strategies.



STRATEGY #1

Support the expansion of responsible livestock production in Nebraska including all species and all sizes of operations.

Even with the growth of the ethanol industry, livestock production continues to be the number one customer for Nebraska corn producers. Nebraska's corn industry wants to ensure that responsible livestock production thrives in this state—and over the past several years, the Nebraska Corn Board has proven its commitment to livestock with a number of partnerships and direct investments.

Livestock production is also a critical factor in the long-term success of the ethanol industry in Nebraska. Ethanol plants enjoy a better bottom line when they have a readily available market for their distillers grains co-product close at hand. By 2009, ethanol plants in Nebraska will be producing some 6 million tons of distillers grains—three times the amount produced today.

TACTICS

Expand the Alliance for the Future of Agriculture in Nebraska (A-FAN)

Established in 2006, A-FAN is a non-profit organization that works one-on-one with Nebraska producers to help establish or expand livestock production. A-FAN works with producers of all sizes and all types of livestock production—from pork to beef, from dairy to poultry. The emphasis is on environmental responsibility and community relations—helping producers comply with regulations and communicate proactively with neighbors. A-FAN provides its services at no charge to producers.

- The Nebraska Corn Board was one of the first organizations (along with Nebraska Farm Bureau) to recognize the need to **help livestock producers of all sizes grow their operations** or start new ones—with a keen eye toward community relations and environmental stewardship. The Board has been a key financial supporter of A-FAN since its inception.
- At this point, A-FAN is essentially a **one-man operation** with the responsibility of covering the entire state. Results have been impressive, but there is so much more that needs to be done to help producers and communities work together to make livestock a key economic development strategy for rural Nebraska.
- Resources are needed to help study and document economic and marketing strategies that help all livestock producers expand and/or site new facilities while **protecting our environment and addressing community concerns**.

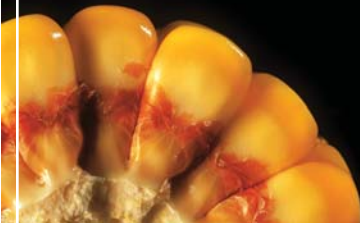


STRATEGY #1 (continued)

More Aggressive Livestock Recruitment Efforts

Thanks to an attractive combination of climate, water and readily available feed source, cost of gain in Nebraska is considerably less than in many other beef producing states. Additionally, the dairy industry is especially suited to Nebraska for similar reasons.

- Increase our **dairy recruitment efforts** through partnership with the Nebraska Department of Agriculture, University of Nebraska, Department of Environmental Quality and local officials. This campaign should focus on attracting dairy operations from other states and nations. We will also work with existing dairies to solicit their involvement and to help them expand their operations responsibly.
- Develop a campaign to recruit **more cattle feeding** into the state, with a particular focus on Texas, Oklahoma and Kansas—with a goal of increasing cattle numbers by 10% in Nebraska lots.



STRATEGY #2

Support research initiatives that address key challenges to the continued success of the state's livestock and ethanol industries.

There has been a resounding call from our in-state corn customers in livestock production for more research on how Nebraska corn producers can meet demand for both feed and fuel—and to determine the best methods for feeding distillers grains to the animals that are typically raised here.

Additionally, there are challenges to the expansion of the livestock industry in the state that inhibit the growth that is essential to meeting the demand of increased availability of distillers grains and creating economic vitality for rural Nebraska. Addressing issues such as odor, water quality, dust, and nutrient management is fundamental to the success of the livestock industry in Nebraska.

Finally, the growth of ethanol and livestock in the state poses challenges in terms of infrastructure, processes and protocols. Portions of the proposed checkoff increase will be targeted to funding the in-state research programs needed to learn more about how best to meet these challenges and transform them into economic opportunity for producers and the entire state.

TACTICS

New Feeding Trials/Research for Distillers Grains

With the production of distillers grains in Nebraska tripling by the end of 2009, we must find new ways to feed this high-value nutritional co-product to more animals. Revenues generated by the corn checkoff increase will be targeted toward research focused on:

- Use of **distillers grains in cow/calf operations** through alternative delivery methods including cubes, pellets, blocks, dry lot feeding and other methods. This will not only expand the beef production market, but will also result in reduced transportation costs in getting distillers grains to cow/calf operators.
- Improving the use of **distillers grains in swine production**—for sows and weaned pigs, from growing to finishing. Monogastric animals such as swine currently cannot use distillers grains at significant ration levels.
- Use of **distillers grains in poultry rations**, helping strengthen the egg, chicken and turkey industries in Nebraska. Nebraska is a national leader in the production of processed egg products and ranks seventh in commercial egg production.



STRATEGY #2 (continued)

- Studying the effect of **fractionation technology** on the nutritional value of distillers grains. This new process, which is being explored by the ethanol industry, creates a number of key opportunities for additional value and new products from corn, but may also have an effect on the value of a feed product that beef producers have come to count on.
- Discovering how Nebraska distillers grains could complement the existing **pet food industry** in the state—and helping Nebraska manufacturers take advantage of this fast-growing market, while creating more demand for distillers grains.

Environmental Research

There is no question that Nebraska can enjoy economic prosperity with the growth of livestock production. However, there are some issues that continue to cause concern among some about the effects of livestock production—as well as the effects of increased corn production and ethanol production in the state. We propose that research dollars be targeted to:

- Address **key environmental issues in livestock production** such as odor, runoff, groundwater quality, phosphorus, sulfur and dust particulates. The concentration of nutrients in distillers grains is also an important focus as more of this co-product is fed in the state.
- Maximize the use of **animal waste in crop production**, thus reducing the use of commercial fertilizer. This will help livestock producers capture greater value from their operations and provide a cost effective input alternative for grain producers.
- **Minimize water usage** in the production of corn, ethanol and livestock. In addition to complementing current research in these areas, we may also look to position Nebraska as an early testing ground for drought tolerant hybrids and focus on increasing water recycling rates and reducing water vapor loss in ethanol production.

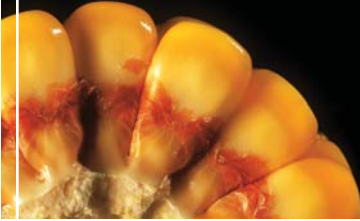


STRATEGY #2 (continued)

Economic Research

Funds in this area will be focused on creating a knowledge base that is critical to communicating value and ensuring infrastructure to support growth of the ethanol-livestock-corn industries in the state. Research projects will be focused on:

- Performing a detailed analysis on the **economic impact of livestock production** on growth at both the state and local levels. As rural Nebraska looks to improve its economic outlook, revitalize rural communities and create opportunity for young families, it will be critical to demonstrate in no uncertain terms the powerful contribution that livestock production makes in achieving these objectives. This information will be valuable for zoning boards, county officials, economic development groups and livestock producers as they develop strategies for enhancing the economic vitality of their communities.
- Developing a **comprehensive transportation report and plan** for the continued delivery of corn, distillers grains, ethanol, livestock and fertilizer via rail and roadways. (A 100-million-gallon ethanol plant will be managing more than 150 semis per day!) Important issues such as rail capacity and just-in-time logistics will also be studied.



STRATEGY #3

Develop, foster and nurture key partnerships and initiatives that provide a foundation for long-term growth and success of the corn, ethanol and livestock industries in the state—and help Nebraska corn producers leverage their checkoff investment by building synergy with other like-minded organizations.

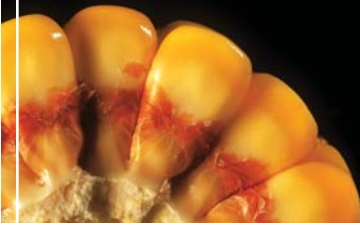
Through their checkoff, Nebraska corn producers can help support these initiatives financially— and they can provide human resources as well; but this effort can only bear fruit if we are able to cooperate and collaborate with key stakeholders such as livestock producers, the University of Nebraska, ag membership organizations and others. The Nebraska Corn Board has focused on outreach to these groups in the past. The tactics outlined below are designed to strengthen these relationships and create even more effective coalitions to help Nebraska develop programs designed to sustain the success of ethanol, livestock and corn producers in the state.

TACTICS

Commitment to the University of Nebraska-Lincoln (UNL), Institute of Agriculture and Natural Resources (IANR) Animal Science Department

Given the current State budget situation, it is very difficult for UNL-IANR to obtain funding to address faculty, staff and facility needs that will support this unprecedented opportunity in Nebraska. We propose to:

- Support investment in UNL facilities that enable the **retention and recruitment of top faculty** to address research and extension needs in swine, dairy, poultry and beef production.
- Support research and development of **public policy options** that address issues related to livestock zoning.
- Develop a **Nebraska Model for Beef Feeding** that best matches lot size for efficiency of scale, environmental impact and cooperative marketing efforts.
- Establish a **center for beef cattle nutrition** using a team approach to ruminant animals utilizing various forms of distillers grains.
- Create a joint advisory task force with **UNL and the Nebraska Cattlemen** to advise on distillers grains utilization research that could be funded with corn checkoff dollars.
- Create a joint advisory task force with **UNL and the Nebraska Pork Producers Association** on distillers grains research and feeding trials that could be supported with corn checkoff dollars.



STRATEGY #3 (continued)

- Work closely with UNL Extension to facilitate **delivery of research and feeding trial results** so that livestock producers can put this information to work quickly and profitably.

Improve risk management for corn and livestock producers

While they express concern about the higher cost of corn, many livestock producers have said it's even more difficult to deal with wild swings in prices. We need to bring greater consistency and predictability to the commodity markets—and provide producers with the education and information they need to better manage risk. We propose to:

- Work with the UNL Agriculture Economics Department to consider ways that crop and livestock producers can **build alliances and reduce risk and price volatility** of their commodities—including the expansion and delivery of commodity marketing education.
- Expand continuing education classes through the University of Nebraska, the state community college system and other means to offer **risk management curriculum** for corn and livestock producers.
- Work to improve a **federal risk management program** for livestock producers.
- Work to improve Nebraska's competitiveness in meat export markets by **improving our age and source verification efforts**—including the “Locate in 48” premises and animal ID programs.

Establish and strengthen coalitions with key partners

Nebraska corn producers cannot accomplish these objectives alone. Therefore, increased checkoff revenues would be directed to:

- Facilitate the creation of a **Nebraska Renewable Fuels Association** that addresses industry, environmental and production efficiency issues.
- Coordinate efforts of the University of Nebraska, ethanol technology providers (such as ICM, Delta-T, etc.), local Natural Resource Districts and seed genetics companies to address **water usage and water management issues**.
- Coordinate efforts between the **Nebraska Cattlemen and ethanol producers** to develop feeding trials on new co-products that will emerge from new ethanol technologies.
- Coordinate with the Nebraska Department of Agriculture, U.S. Meat Export Federation and industry groups to ensure that **Nebraska meat products are featured around the world**—creating lucrative international markets for Nebraska livestock producers.



Future Business Plan



Summary

The Nebraska Corn Board has not taken lightly the idea of exploring a possible increase in the corn checkoff to the maximum allowed by the 1978 Nebraska Corn Resources Act. This business plan is the result of countless hours of thought, planning and debate—and we believe it is a solid document which provides a clear roadmap for helping Nebraska capitalize on the opportunities that are right in front of us—today.

While driven by the growth of the ethanol industry, this broad based initiative actually puts livestock at center stage. Through a combination of research, recruitment and coalition building, we propose to leverage the strength and economic power that livestock already provides Nebraska—and parlay that advantage to increase our leadership in livestock production. If we can accomplish that objective, the success of corn producers, ethanol producers and the entire state of Nebraska is virtually assured.

Just as importantly, every dollar generated by the proposed checkoff increase will be invested in Nebraska.

Because this is **our** opportunity.

Because this is **our** time.

Never before has Nebraska been better situated to take advantage of a new generation of value-added agriculture. We have a rare opportunity to take control of our economic future—to set the stage for a future of statewide prosperity and success. From farm fields to feed lots, from county roads to Dodge Street—every citizen of Nebraska will benefit from the work outlined in this plan.

We can stand by and wait—and risk squandering this unique moment. Or we can take action and do everything possible to transform this moment into decades of prosperity for our state.

The Nebraska Corn Board believes that **now** is the time to act—and with your support, we can energize and invigorate Nebraska for years to come.

Nebraska Corn Board

301 Centennial Mall South, Fourth Floor

Box 95107 • Lincoln, Nebraska 68509

Phone 402.471.2676

www.nebraskacorn.org